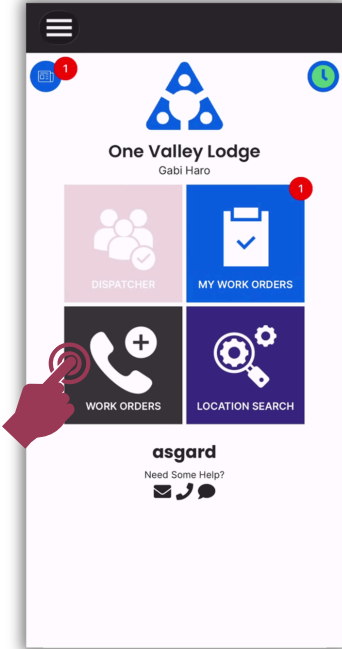
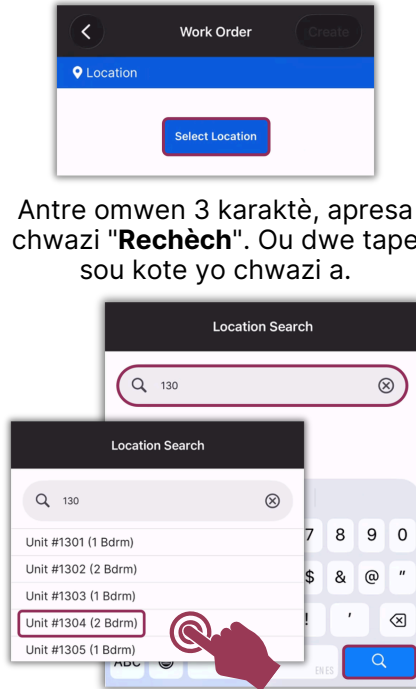


Etap 1: Tape mozayik Lòd Travay.

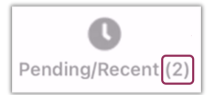


Etap 2: Tape Chwazi Kote.



Antre omwen 3 karaktè, apres chwazi "**Rechèch**". Ou dwe tape sou kote yo chwazi a.

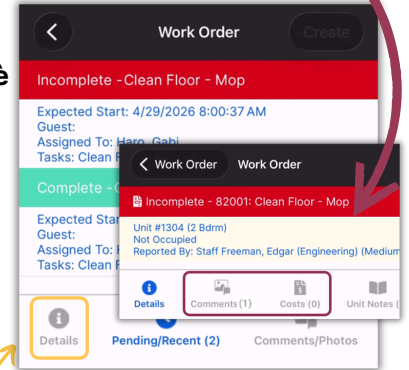
Etap 3: Bouton Annatant/Dènye endike nenpòt lòd travay nan 14 jou.



Peze pou ouvri epi wè detay sou lòd travay.

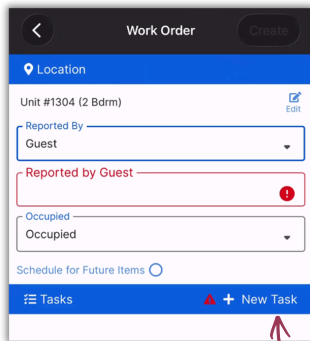
Enkonplè

Ranpli



Peze **Detay** pou retounen nan lòd travay ou, pa flèch Retounen an.

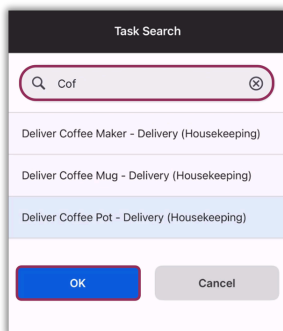
Etap 4: Peze pou chanje Rapòte Pa pou Envite oswa Anplwaye jan sa nesesè. Si w chwazi Envite, yo mande Non Envite la.



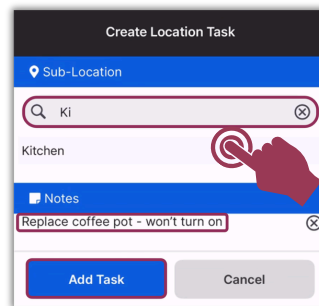
Non itilizatè a k ap antre nan lòd travay la pral otomatikman peple nan jaden an **Anplwaye**.

Peze **Nouvo Travay**.

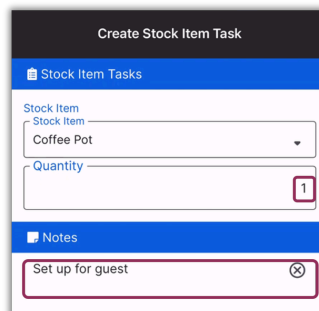
Ajoute **mo kle (yo)** nan jaden Rechèch, Peze sou **Travay** la pou chwazi, Peze **Oke**.



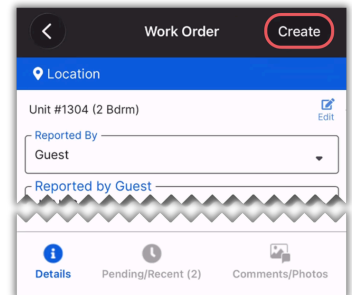
Etap 5: Ajoute yon Sou-kote lè l sèvi avèk ba rechèch la oswa pa defile nan lis la.



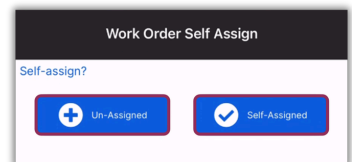
Nan espas **Nòt** la, ajoute Kantite ak/oswa enfòmasyon adisyonèl jan sa nesesè.



Etap 6: Peze Kreye.



Peze bouton **devwa ki** apwopriye a.



Siksè! Peze **OK**.

Success
Success! Your work order has been created.

OK